



jordan fishwick

DIDSBURY
Palatine Road



Palatine Road, Didsbury, M20 2WG

Guide Price £1,400,000



The Property

A stunning detached family home forming part of an exclusive gated development known as 'Rookery Gardens', with easy access to the villages of both Didsbury & West Didsbury.

Presented to the highest of standards with over 3,000 sq ft of beautifully presented living space over three floors, the property must be viewed to fully appreciate, with numerous noteworthy features including a wonderful open plan family area with a cutting-edge Harvey Jones kitchen with boiling tap and Bora Hob, large island with seating, log burning stove, Dolby 4.1 surround sound media unit, and bi-fold doors to the rear landscaped garden, welcoming entrance lobby with bespoke furniture, separate generous dining room, Lutron Lighting system downstairs, five spacious double bedrooms, the master being particularly large with a bespoke dressing room and designer en-suite bathroom, two further luxury bathrooms, underfloor heating, built-in eaves storage, landscaped gardens to the front & rear, ample parking and a separate detached garage. In addition, there is a Sonos sound system throughout with Control 4 App control.

Externally to the front there is a private gated walled terrace which enjoys the morning sunshine, off-road parking and a detached garage whilst to the rear is a modern, low maintenance, landscaped private West facing garden with heated covered seating area, water feature, built-in outdoor seating, gas fire pit and a built-in American style BBQ with mains gas supply.

Directions

M20 2WG



- Stunning detached family home
- Beautifully presented living space over 3,000 sq ft
- Five double bedrooms
- Three luxury bathrooms
- Large open plan Harvey Jones family kitchen
- Separate generous dining room
- Impressive entrance & downstairs WC
- Bespoke fitted furniture
- Landscaped gardens & detached garage
- Select gated development

Postcode - M20 2WG

EPC Rating - B

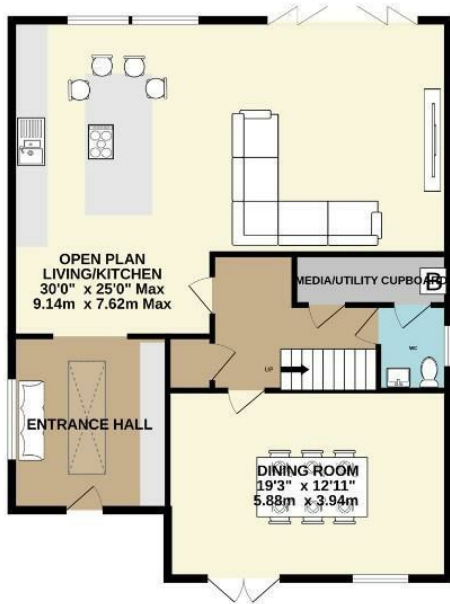
Floor Area - 3238.00 sq ft

Local Authority - Manchester City Council

Council Tax - G



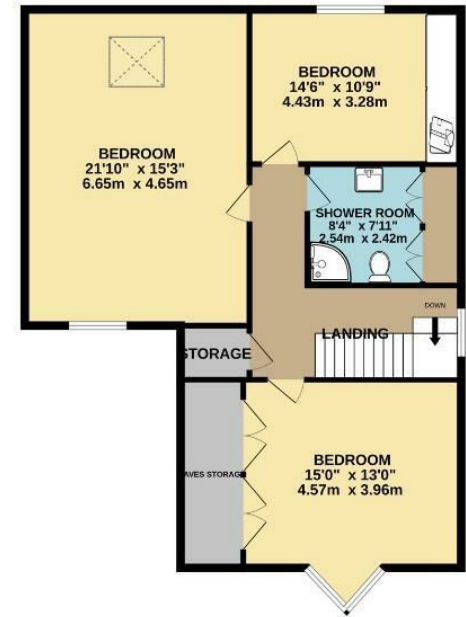
GROUND FLOOR
1285 sq.ft. (119.4 sq.m.) approx.



1ST FLOOR
973 sq.ft. (90.4 sq.m.) approx.



2ND FLOOR
980 sq.ft. (91.1 sq.m.) approx.



TOTAL FLOOR AREA : 3238 sq.ft. (300.8 sq.m.) approx.
Measurements are approximate. Not to scale. Illustrative purposes only
Made with Metropix ©2025



These particulars are believed to be accurate but they are not guaranteed and do not form a contract. Neither Jordan Fishwick nor the vendor or lessor accept any responsibility in respect of these particulars, which are not intended to be statements or representations of fact and any intending purchaser or lessee must satisfy himself by inspection or otherwise as to the correctness of each of the statements contained in these particulars. Any floorplans on this brochure are for illustrative purposes only and are not necessarily to scale.

Offices also at: Wilmslow, Macclesfield, Hale, Sale, Chorlton, Glossop, Manchester & Salford

757-759 Wilmslow Road, Didsbury Village, Manchester

0161 445 4480

didsbury@jordanfishwick.co.uk
www.jordanfishwick.co.uk